

# Installation Manual

## IDAS “DRT” framed Filters

Prepared by ICAS Enterprises

The IDAS **DRT** framed Filters can be attached to and detached from the following drop-in mount adapters:

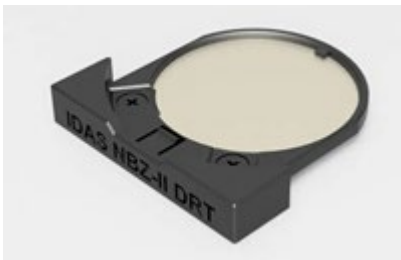
- Canon EF-EOS R drop-in mount adapter
- Meike MK-EFTR-C (EF-R) mount adapter
- Meike MK-EFTE-C (EF-E) mount adapter
- [Kolari EF-EOS R Drop-In Filter Mount Adapter For Canon and RED RF Cameras](#)

The line up of the IDAS DRT framed filters includes the following substrates:

HEUIB-II DRT, NGS1(LPS-D3) DRT, ODW DRT, NBZ-II DRT, GNB DRT and DTD DRT

### Installation to the camera:

Take out the DRT framed Filter from the package.



Insert into the EF-EOS R or a compatible drop-in mount adapter.

Fully insert until the filter will not move forward any farther. Now it's ready to use.



#### Note 1:

The drop-in mount adapter to use with is not included in the DRT frame package. You can please separately prepare one yourself.

#### Note 2:

The dimensional specifications of the DRT framed products are subject to change without a prior notice.